

EASY CONTROL ENSURING SAFETY AND COMFORT

Standard pilot control leads to comfort and convenience

The hexahedral cab enclosed by explosion-proof glass comes with sound insulation, noise reduction, damping and a broad view at either front or rear sides

Easy-to-touch buttons and green interior decoration create a healthy and comfortable environment



HIGH HOLDING CAPACITY AND EFFICIENCY

The improved bucket structure can hold more materials, with optional bucket capacity ranging from 2.2 to 4.5 m³

Short handling circle duration (10 seconds) contributes to high loading/unloading efficiency

3300mm wheelbase and 175KN digging force ensure steady holding behavior and serve well heavy-duty conditions



MAINTENANCE FACILITATION

Simple and beautiful layout of the pipelines

Centralized lubricating spots encourage one-stop maintenance

Large-opening hood provides ample room for maintenance

Safe handrails mounted on cab roof facilitate climbing for maintenance

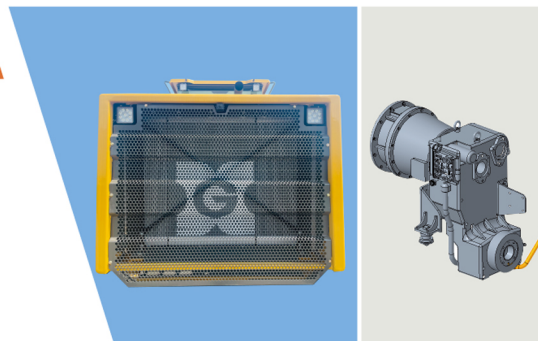


IMPROVED STRUCTURE ENSURING RELIABILITY

Components come with high reliability thanks to FEM refined engineering

ZF dual variable power, XGMA F drive axle (Meritor optional) and large torque transmission shaft bring about smooth gear shifting and reliable transmission

With single-row horizontal aluminum heat dissipation system, sectional area of the radiator increased by 23%, leading to good performance in heat dissipation

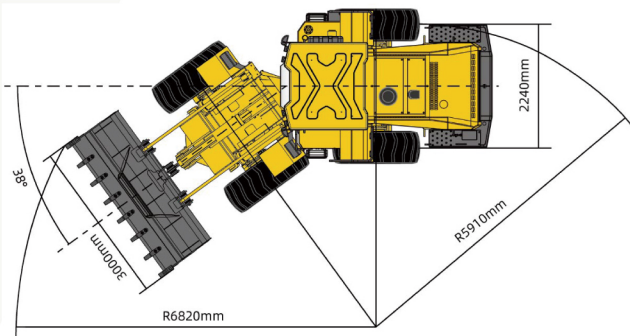
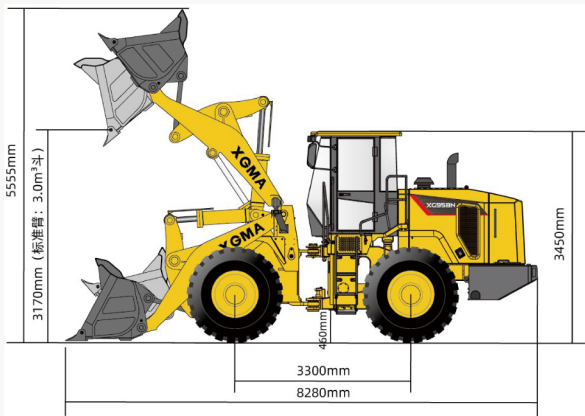


XG958N



TECHNICAL PARAMETERS AND BASIC CONFIGURATION

Main items	Unit	
Engine		
Engine	Manufacturers	Weichai
Engine	Model number	WD10G220E21
Rated power	Kw	162
Rated speed	r/min	2200
Max torque	N.m	930
Fuel comsumption per hour	g/kw.h	≤220
Overall machine Performance Parameter		
Overall length	mm	8280
Overall width (Tire lateral)	mm	2880
Overall height	mm	3450
Wheel base	mm	3300
Tread	mm	2240
Ground clearance	mm	460
Bucket width	mm	3000
Turn radius	mm	5910
Min.Turn radius outside of bucket	mm	6825
Ground clearance of the lower pin of the arm	mm	4170
Max. operating height (standard bucket)	mm	5555
Max. Dumping height	mm	3170
Dumping reach	mm	1200
Max. turning angle	°	38



Main technical Parameter		
Standard bucket capacity	m ³	3
Optional capacity	m ³	2.2-4.5
Rated load	kg	5000
Operating weight	kg	17300
Lifting time	s	5.5
Lifting, dumping and lowering	s	10
Max Breakout force	KN	175
Max.drawing force	KN	160
Climbing ability	°	29
Fuel tank	L	290
Hydraulic tank	L	210
Working pressure of load hydraulic system	Mpa	18
Working pressure of steering hydraulic system	Mpa	15